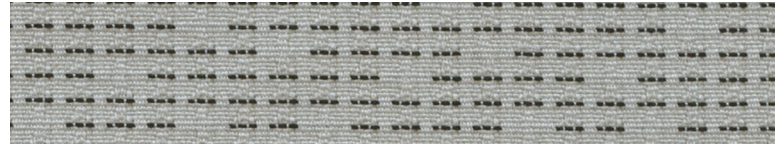
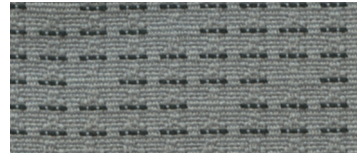


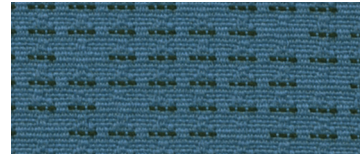
INPUT 5598



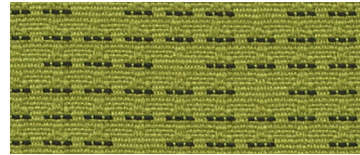
CLOUD 1471



DOVE 1472



SKY 1481

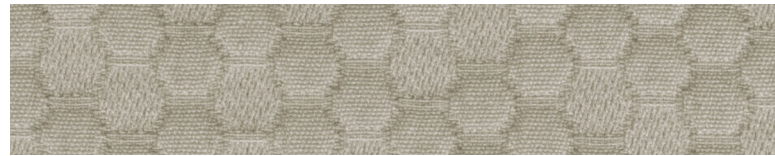


LIME 1477



MIDNIGHT 1483

EMERGE 2178



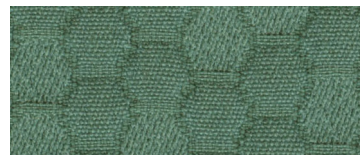
PARCHMENT 901



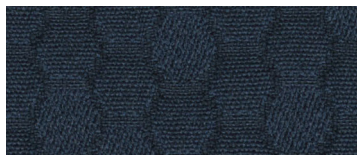
GRAPHITE 914



TERRA ROSE 903

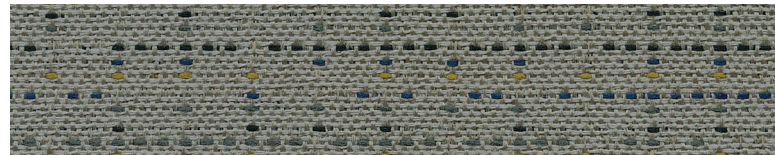


ALOE 908

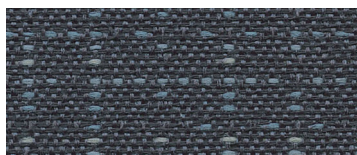


SQUID INK 906

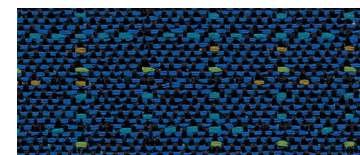
COUTURE 4858



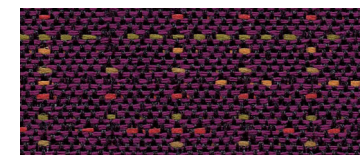
THIMBLE 1756



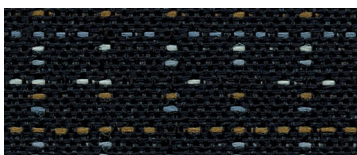
SHEARS 1750



TAILOR 1757

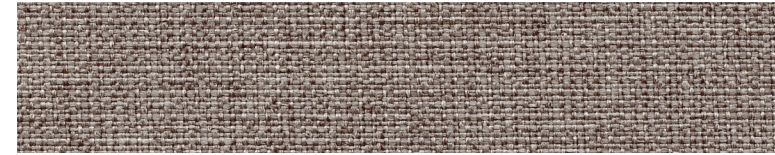


NEEDLEWORK 1753

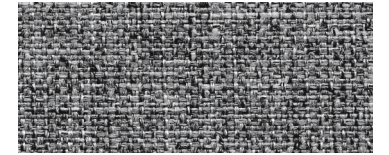


SEAM 1752

PALLETTE 2155



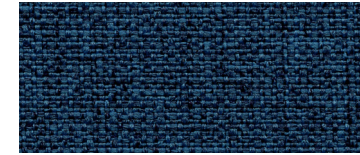
ALDER 1136



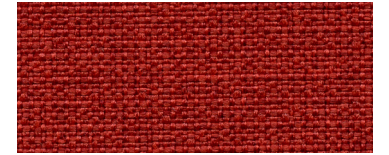
BIRCH BARK 1133



IRON 1134

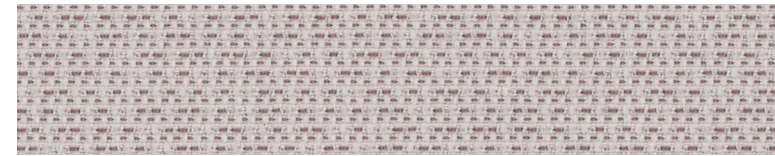


INDIGO 1152

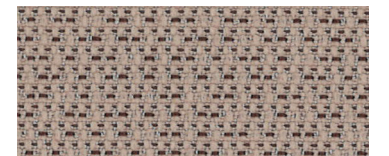


SUMAC 1140

SHIFT 2179



ZEPHYR 942



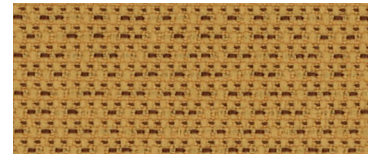
VAPOR 943



STEELE 938

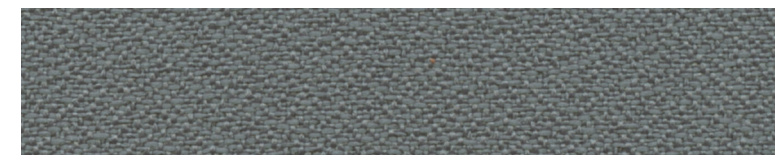


FJORD 940



SAUTERNE 921

OPEN HOUSE 2334



WOLF 2027



FOSSIL 2093



MIDNIGHT 2025



ONYX 2016



COFFEE BEAN 2083

RFM[®] seating

Quick Ship 2024

Grade B

duvaltex

TECHNICAL INFORMATION

Content 54"	Content & Backing	Weight/ Linear Yd	Pattern Repeat	Finish	Abrasion Wyzenbeek	Light Fast- ness	Flammability
COUTURE [†] Directional Supplier: Duvaltex	57% post-consumer recycled polyester 25% pre-consumer recycled polyester 18% polyester Acrylic backcoating	9.2 oz.	14" H 14.5" V	CO stain repellent	100,000 Double Rubs	40 Hours	CA Technical Bulletin 117-2013 Sec. 1
EMERGE [†] Directional Supplier: Duvaltex	81% post-consumer recycled biodegradable* polyester 19% pre-consumer recycled biodegradable* polyester	12.4 oz.	12" H 18.25" V	None	100,000 Double Rubs	40 Hours	CA Technical Bulletin 117-2013 Sec. 1
INPUT [†] Directional Supplier: Duvaltex	94% post-consumer recycled polyester 6% pre-consumer recycled polyester	11 oz.	12.25" H 2.5" V	None	100,000 Double Rubs	40 Hours	CA Technical Bulletin 117-2013 Sec. 1
OPEN HOUSE [†] Directional Supplier: Duvaltex	65% pre-consumer recycled polyester 35% post-consumer recycled polyester	13.1 oz.	None	None	250,000 Double Rubs	40 Hours	CA Technical Bulletin 117-2013 Sec. 1
PALETTE [†] Directional Supplier: Duvaltex	100% Polyester	12 oz.	None	None	100,000 Double Rubs	40 Hours	CA Technical Bulletin 117-2013 Sec. 1
SHIFT [†] Directional Supplier: Duvaltex	100% post-consumer recycled biodegradable* polyester	12.3 oz.	None	None	100,000 Double Rubs	40 Hours	CA Technical Bulletin 117-2013 Sec. 1

[†] Duvaltex products are PFAS free

* Biodegradable* in landfill after 1,278 days (tested under ASTM D5511)

CLEANING INFORMATION

The cleaning code for the product on this card is WS. Prompt cleaning is always recommended.

WS: Water/Solvent Cleaner - Spot clean with a mild solvent, an upholstery shompoo, or the foam from a mild detergent. When using a solvent or dry cleaning product, follow instructions carefully and clean only in a well-ventilated room. Avoid any product that contains carbon tetrachloride or other toxic materials. With either method, pretest a small area before proceeding.

For detailed specifications, care and cleaning information for each pattern, please contact our supplier.

ADDITIONAL INFORMATION

Memo Samples: Individual memo samples can be ordered.

Color Matching: RFM always attempts to ship a satisfactory commercial match. Because of industry standard dye lot variation, colors may not match exactly.

Specifications: Specifications are correct at the time of printing. Current specifications are available on our website.

For more information or assistance with products or services, call us at 800.447.5542 or refer to our website, www.rfmseating.com.