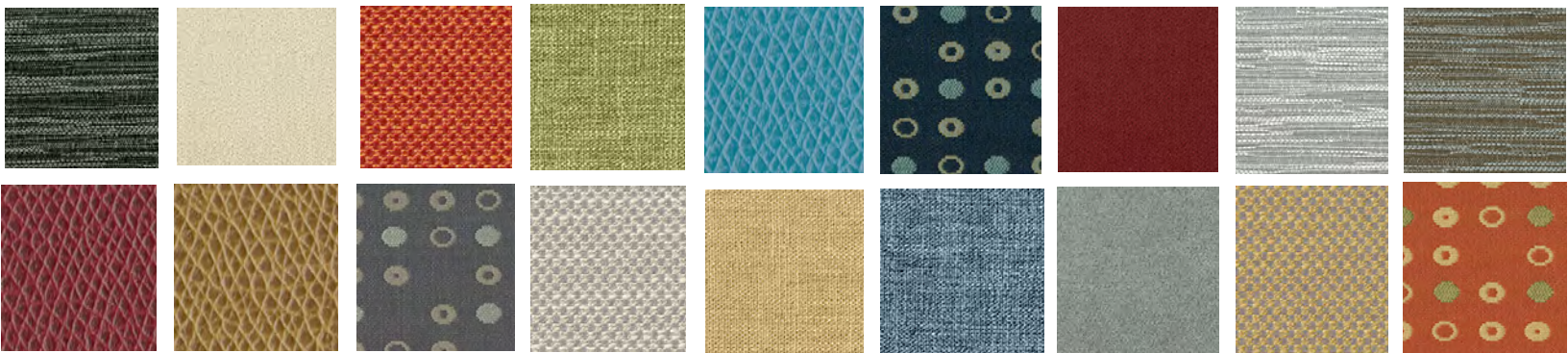


YOUR STYLE



GRADE B

WINSLOW
HIGH COTTON
FINE TUNE
ARCHETYPE
TOME

GRADE C

RUSHMORE

2022

ARCHETYPE

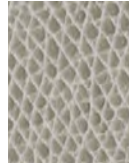


QUARTZ

RUSHMORE



PARCHMENT



SILT

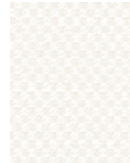


SASSY

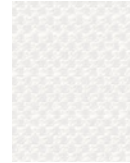


FLAXEN

TOME



SISAL



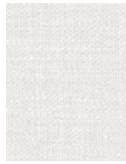
FORGE



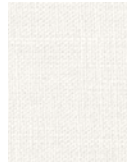
SORREL



SUNDANCE



SILT



HEMP



CARROT



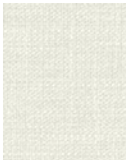
TEAK



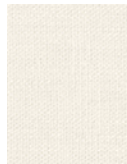
POPPY



PUEBLO



HERBAL



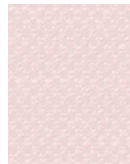
BOURBON



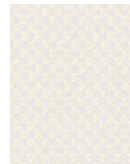
PEPPER



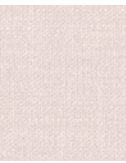
SADDLE



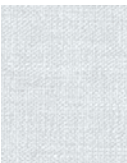
SCARLET



HEIRLOOM



VERMILLION



ANCHOR



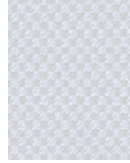
AQUAMARINE



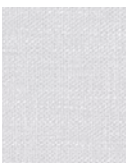
EMERALD



SUGARPLUM



SAPPHIRE



BLACKBERRY



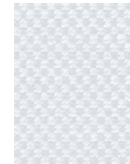
ADMIRAL



COBALT



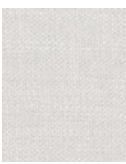
BLUEBERRY



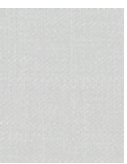
POOL



JEWEL



CAFE



SMOKE



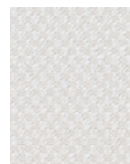
GROTTO



RAVEN



CHARCOAL



SEPIA

Fabric Specifications and Technical Data

	WINSLOW	HIGH COTTON	FINE TUNE	ARCHETYPE	RUSHMORE	TOME
Content:	Polyester 100%	Polyester 100%	Polyester 100%	Polyester 79% Rayon 21%	Polyurethane 100%	Polyester 100%
Finish:	N/A	Teflon	N/A	*i-clean™	*i-clean™	*i-clean™
Width:	54"	54"	54"	54"	54"	54"
Cleaning Code:	W	W	W	W	WS	W
Abrasion:	40,000	100,000	40,000	75,000	200,000	95,000
Weight:	11.2 oz / Lin. yd.	17.4 oz / Lin. yd.	15.9 oz / Lin. yd.	9.0 oz / Lin. yd.	20.3 oz / Lin. yd.	10.61 oz / Lin. yd.
Flammability Pass:	CA 117 – 2013 UFAC Class 1 NFPA 260	CA 117 – 2013 UFAC Class 1 NFPA 260	CA 117 – 2013 UFAC Class 1 NFPA 260	CA 117 – 2013 UFAC Class 1 NFPA 260	CA 117 – 2013 UFAC Class 1 NFPA 260 MVSS 302	CA 117 – 2013 UFAC Class 1 NFPA 260
Lightfastness:	40 Hours Class 4	40 Hours Class 4	40 Hours Class 4	40 Hours Class 4	200 Hours Class 4	40 Hours Class 4
Colorfastness:	Wet: Class 4 Dry: Class 4	Wet: Class 4 Dry: Class 4	Wet: Class 3 Dry: Class 4	Wet: Class 4 Dry: Class 4	Wet: Class 3 Dry: Class 4	Wet: Class 3 Dry: Class 4
Breaking Strength: ASTM D5034	Warp: 135 lbs. Weft: 184 lbs.	Warp: 87 lbs. Weft: 106 lbs.	Warp: 163 lbs. Weft: 141 lbs.	Warp: 152 lbs. Weft: 116 lbs.	Warp: 98 lbs. Weft: 83 lbs.	Warp: 238 lbs. Weft: 228 lbs.
Seam Slippage: ASTM D4034	Warp: 74 lbs. Weft: 49 lbs.	Warp: 76 lbs. Weft: 92 lbs.	Warp: 65 lbs. Weft: 47 lbs.	Warp: 52 lbs. Weft: 55 lbs.	Warp: 84 lbs. Weft: 85 lbs.	Warp: 68 lbs. Weft: 48 lbs.
Pilling Resistance: ASTM D3511	Class 4	Class 4	Class 4	Class 4	Class 4	Class 4

*i-clean™- a high performance stain and moisture repellent, based on Nano technology

