

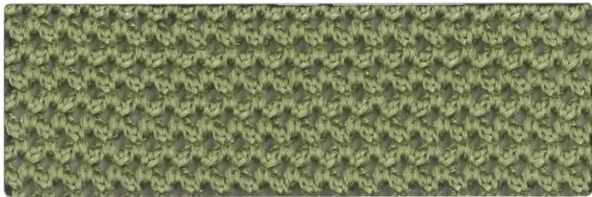
## TEKNIT MESH

### BLEACH CLEANABLE MESH COLOR OPTIONS:

Task chair back	\$75 List
Task chair seat	\$75 List
Guest chair	\$50 List



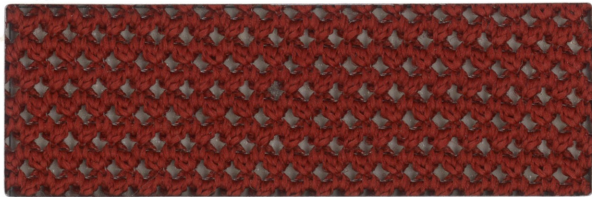
**Cappuccino**  
BC7



**Xanadu**  
BC12



**Smoke**  
BC3



**Dark Crimson**  
BC10



**Wine**  
BC39



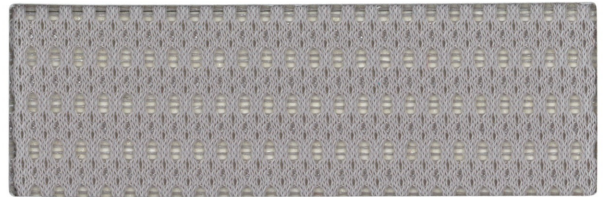
**Monarch Blue**  
BC2

### STANDARD MESH COLOR OPTIONS:

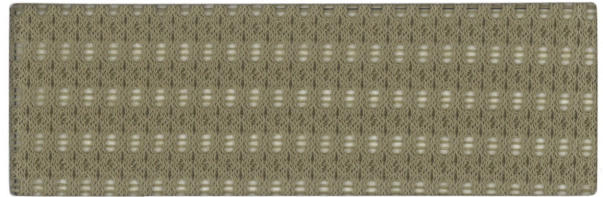
Task chair back	\$50 List
Task chair seat	\$50 List
Guest chair	\$30 List



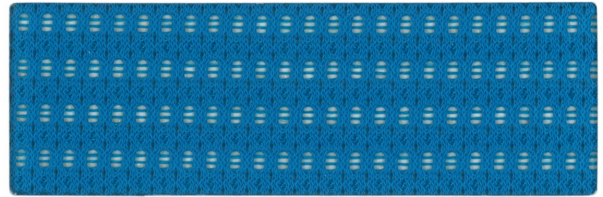
**White**  
M01



**Silver**  
M02



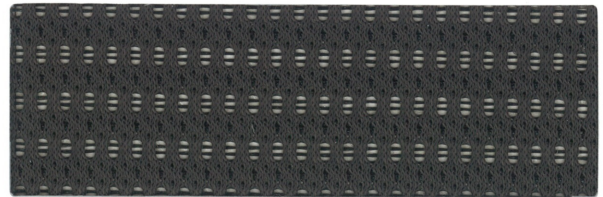
**Cappuccino/Tan**  
M06



**Azure/Blue**  
M05



**Red**  
M04



**Charcoal**  
M03

# TECHNICAL INFORMATION

## TEKNIT MESH

### BLEACH CLEANABLE MESH COLOR OPTIONS:

Content	Weight/ Linear Yd	Abrasion Wyzenbeek	Light Fastness	Seam Slippage	Breaking Strength	Crocking Wet/Dry	Flammability
79% Polypropylene 21% Polyester	10.9+/-0.5oz/ sq. yd.	250,000 Double Rubs	Grade 4 min. at 40 hr.	N/A	Wales 90 lbf Courses 190 lbf	3/4	CA Technical Bulletin 117-2013 Sec. 1

### CLEANING INFORMATION

Standard Care Label W-S. Clean with water based cleaning agents, foam or pure, water free solvents. Vacuuming or light brushing is recommended to prevent dust and soil buildup.

May be cleaned with a 10% bleach-to-water solution. Rinse well after cleaning.

### STANDARD MESH COLOR OPTIONS:

Content	Weight/ Linear Yd	Abrasion Wyzenbeek	Light Fastness	Seam Slippage	Tensile Strength	Crocking Wet/Dry	Flammability
100% Polyester	348 G/Y (44" W)	30,000 Double Rubs	20 hours Class 4.5	86.4 lbf warp 100.1 lbf fill	318.1 lbf warp 235.6 lbf fill	5/5	Cal. 117-E

### CLEANING INFORMATION

The cleaning code for the product on this card is W. Prompt cleaning is always recommended.

**W:** Spot clean only with water based upholstery shampoo or foam cleaner. Pretest a small inconspicuous area before proceeding. Do not over wet. Do not use solvents to spot clean. Cushion covers should not be removed and laundered. To prevent overall soiling, frequent vacuuming or light brushing with a non-metallic, soft bristle brush to remove dust and grime is recommended. When cleaning a spill, blot immediately to remove spilled material. Evenly clean the entire panel in a seam to seam fashion. Do not clean just the spots or stains. When an overall soiled condition has been reached and professional care is required, contact on IICRC certified firm ([www.iicrc.org](http://www.iicrc.org)).

**For detailed specifications, care and cleaning information for each pattern, please contact our supplier.**

### ADDITIONAL INFORMATION

**Memo Samples:** Individual memo samples can be ordered.

**Color Matching:** RFM always attempts to ship a satisfactory commercial match. Because of industry standard dye lot variation, colors may not match exactly.

**Specifications:** Specifications are correct at the time of printing. Current specifications are available on our website.

**For more information or assistance with products or services, call us at 800.447.5542 or refer to our website, [www.rfmseating.com](http://www.rfmseating.com).**