

Ultraleather[®] | Pro



554-1357 Cranberry



554-0008 White Wash



554-3803 Parfait



554-3595 Cork



554-3444 Toasted Bagel



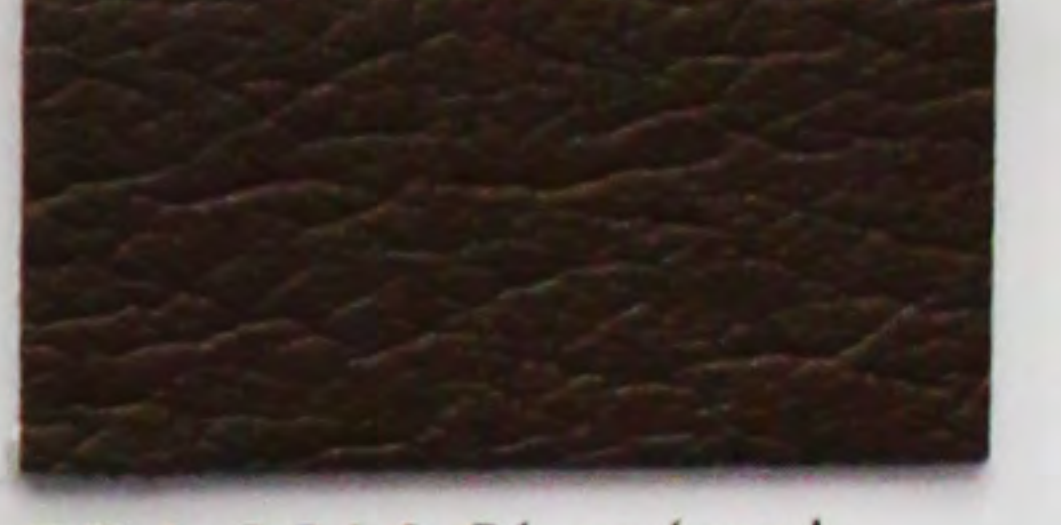
554-9336 Aubergine



554-4530 Coastal



554-2711 Blueberry



554-3214 Chestnut



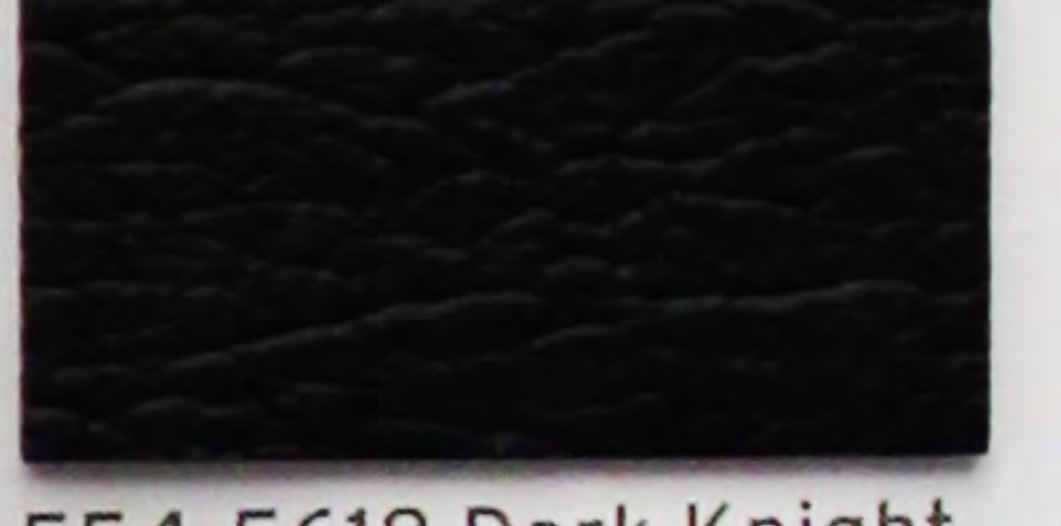
554-3087 Woodcres



554-5648 Cloud

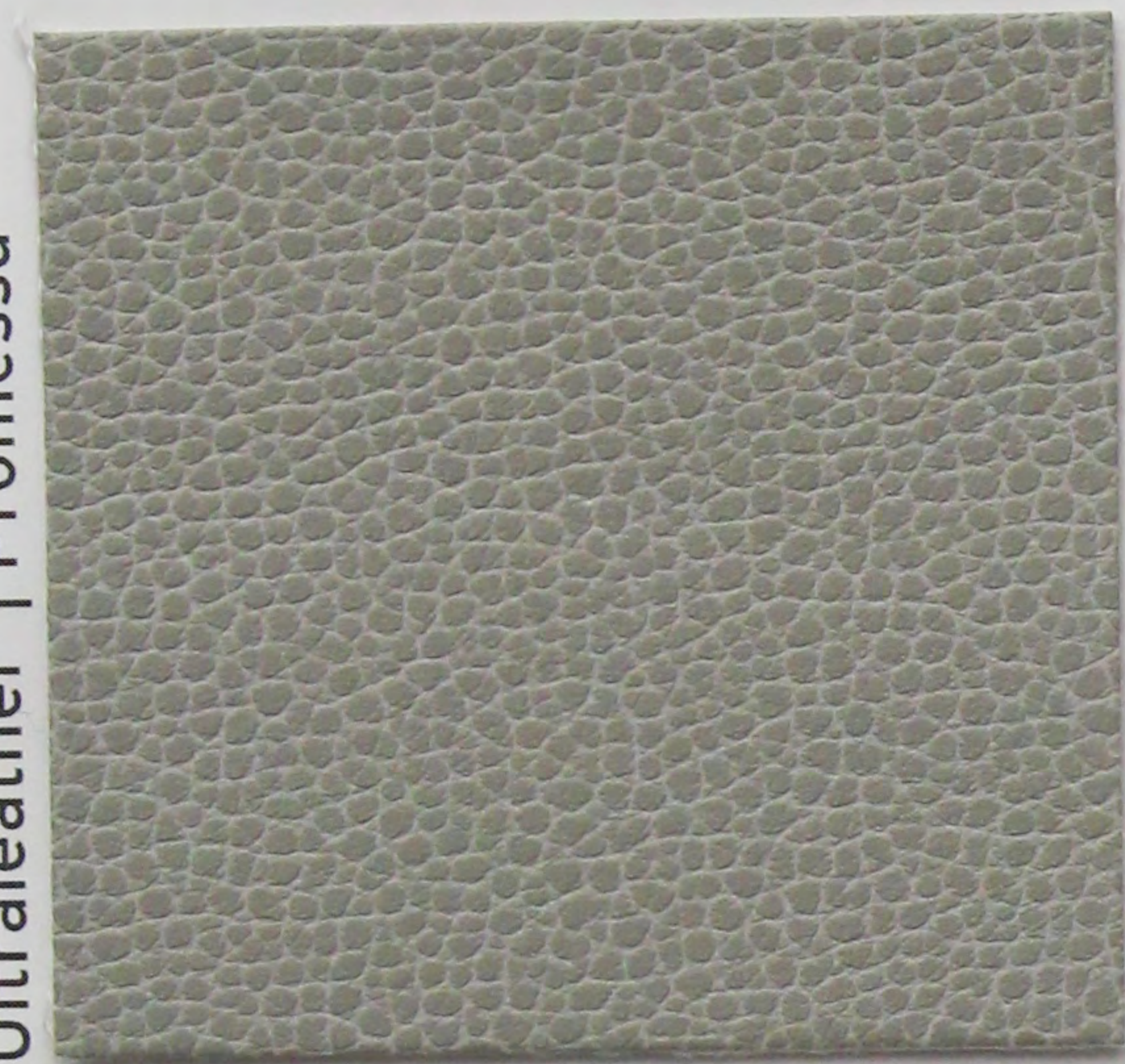


554-5626 Char



554-5618 Dark Knight

Ultraleather[®] | Promessa



363-5818 Ash



363-3152 Parchment



363-3463 Cocoa



363-3141 Fields



363-3224 Brown Earth



363-7273 Aspen Green



363-1398 Cactus Pear



363-1387 Dogwood



363-3145 Bronze



363-2695 Aquamarine



363-2680 Atlantic



363-5817 Shale



363-5845 Ebony

Brisa[®] | Original & Distressed



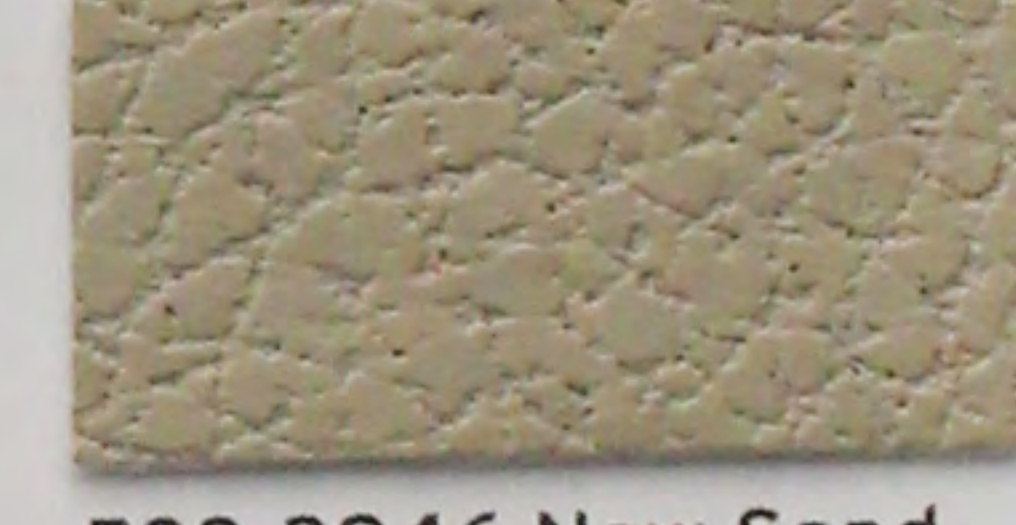
533-4510 Celery



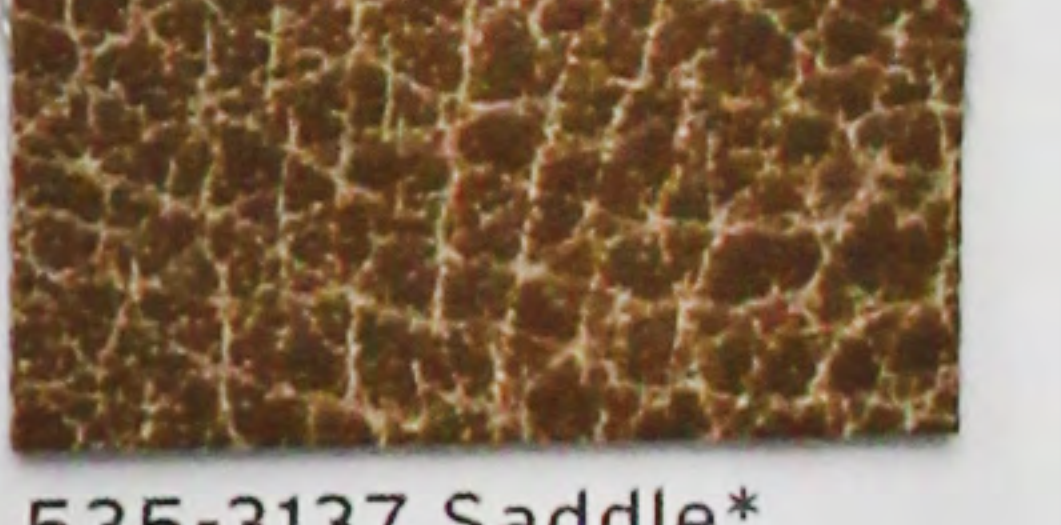
533-5747 White



533-3863 Cream



533-3946 New Sand



535-3137 Saddle*



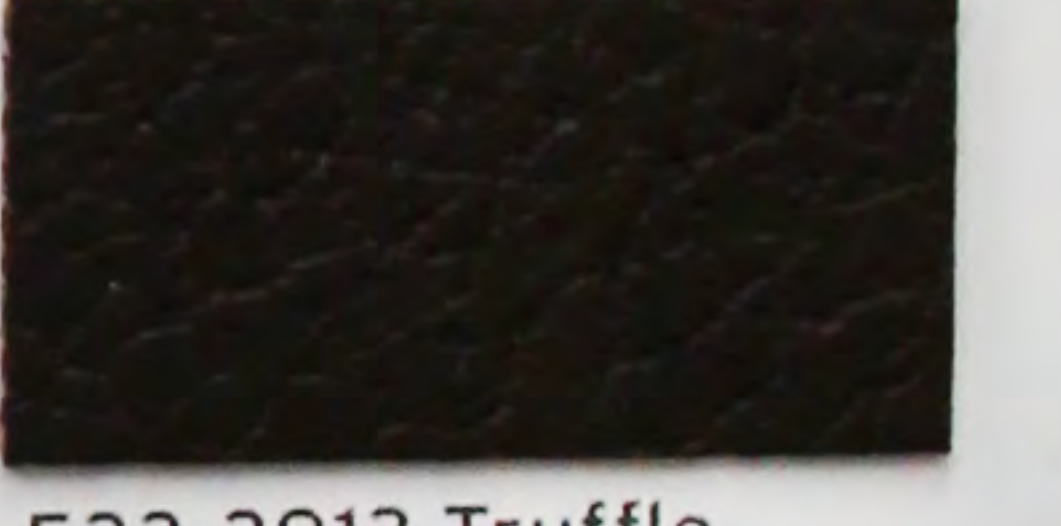
535-3134 Buckskin*



533-3823 Aztec



533-1373 Salsa



533-3913 Truffle



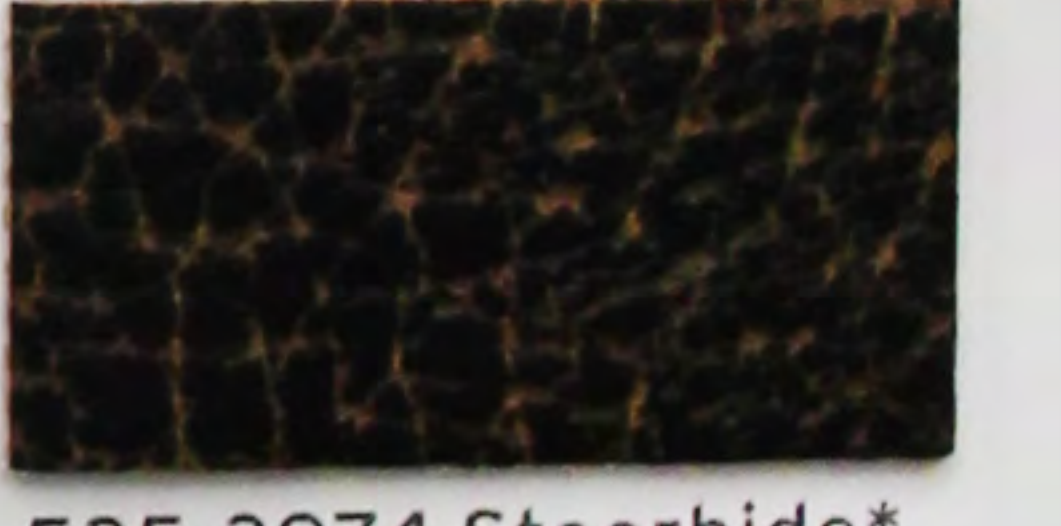
533-2645 Cambridge Blue



533-5820 Quicksilver



533-5749 Black Onyx



535-3974 Steerhide*

Brisa[®] | Fresco



544-3102 Grotto



544-3100 Whey



544-3101 Oatstraw



544-3105 Sepia



544-3197 Patina



544-7313 Sea Glass



544-4445 Pear



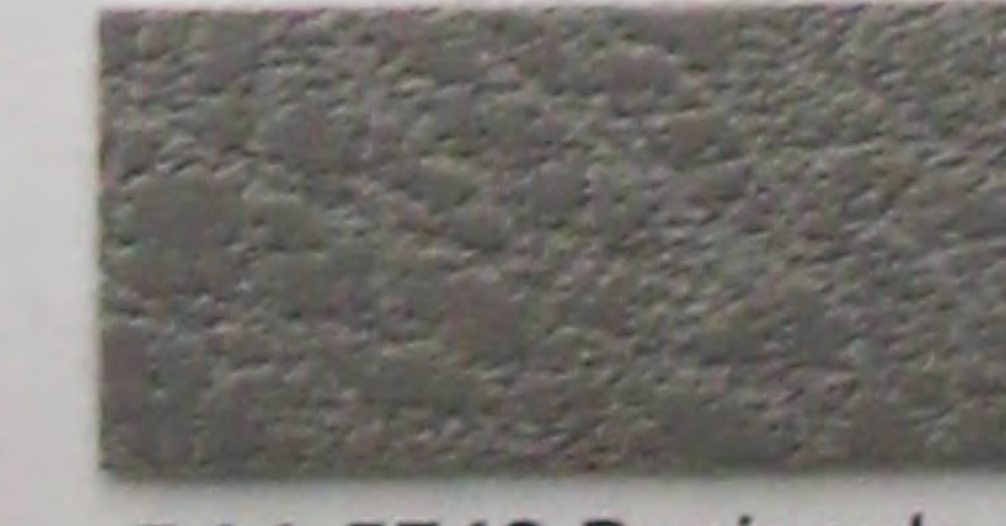
544-5265 Goldenrod



544-1349 Elderberry



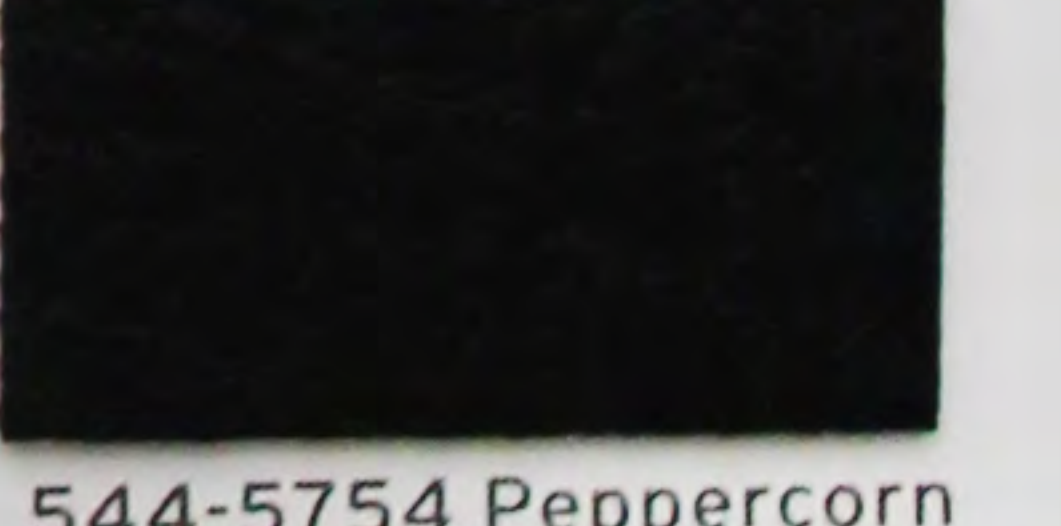
544-2566 Azurite



544-5743 Peninsula



544-5752 Flint



544-5754 Peppercorn

*Denotes Distressed

SPECIFICATIONS

	Ultraleather® Pro Antimicrobial protection Ink and denim resistant	Ultraleather® Promessa® Antimicrobial protection	Brisa® Original Brisa® Distressed Breathable technology	Brisa® Fresco Antimicrobial protection Breathable technology
COMPOSITION:	100% POLYURETHANE SURFACE	100% POLYURETHANE SURFACE	100% POLYURETHANE SURFACE	100% POLYURETHANE SURFACE
WEIGHT:	APPROX. 9.7 OZ. PER SQUARE YARD APPROX. 330 GRAMS PER SQUARE METRE	APPROX. 12 OZ. PER SQUARE YARD APPROX. 410 GRAMS PER SQUARE METRE	APPROX. 9.3 OZ. PER SQUARE YARD APPROX. 315 GRAMS PER SQUARE METRE	APPROX. 9.3 OZ. PER SQUARE YARD APPROX. 315 GRAMS PER SQUARE METRE
THICKNESS:	APPROX. 0.95 MM	APPROX. 1.1 MM	APPROX. 1.0 MM	APPROX. 1.0 MM
WIDTH:	54 INCHES / 137 CM	54 INCHES / 137 CM	54 INCHES / 137 CM	54 INCHES / 137 CM
CHARACTERISTICS				
ABRASION: (MEETS OR EXCEEDS)	ASTM D4157 / 500,000 DOUBLE RUBS* BS 2543 / 200,000 RUBS** *WYZENBEEK **MARTINDALE	ASTM D4157 / 400,000 DOUBLE RUBS* BS 2543 / 180,000 RUBS** *WYZENBEEK **MARTINDALE	ASTM D4157 / 300,000 DOUBLE RUBS* BS 2543 / 160,000 RUBS** *WYZENBEEK **MARTINDALE	ASTM D4157 / 300,000 DOUBLE RUBS* BS 2543 / 160,000 RUBS** *WYZENBEEK **MARTINDALE
AIR PERMEABILITY:	NA	NA	ASTM D737	ASTM D737
ANTIMICROBIAL:	ASTM E2180	ASTM E2180	NA	ASTM E2180
SOUND ABSORPTION:	NA	NA	ASTM C423	ASTM C423
HYDROLYSIS:	14+ WEEKS ASTM D3690-02 SECT. 6.11 (HYDROLYTIC STABILITY) ISO 1419 METHOD C (ACCELERATED AGEING)	14+ WEEKS ASTM D3690-02 SECT. 6.11 (HYDROLYTIC STABILITY) ISO 1419 METHOD C (ACCELERATED AGEING)	14+ WEEKS ASTM D3690-02 SECT. 6.11 (HYDROLYTIC STABILITY) ISO 1419 METHOD C (ACCELERATED AGEING)	14+ WEEKS ASTM D3690-02 SECT. 6.11 (HYDROLYTIC STABILITY) ISO 1419 METHOD C (ACCELERATED AGEING)
ADHESION OF COATING:	ASTM D751	ASTM D751	ASTM D751	ASTM D751
TEAR STRENGTH:	ASTM D2261	ASTM D2261	ASTM D2261	ASTM D2261
BREAKING STRENGTH:	ASTM D5034	ASTM D5034	ASTM D5034	ASTM D5034
COLORFASTNESS				
CROCKING:	AATCC 8, CLASS 5 WET & DRY	AATCC 8, CLASS 5 WET & DRY	AATCC 8, CLASS 5 WET & DRY	AATCC 8, CLASS 5 WET & DRY
LIGHT:	AATCC 16.3, 200 HOURS, GRADE 4-5 ISO 105 - B02 : 1999 GRADE 7/8	AATCC 16.3, 200 HOURS, GRADE 4-5 ISO 105 - B02 : 1999 GRADE 7/8	AATCC 16.3, 200 HOURS, GRADE 4-5 ISO 105 - B02 : 1999 GRADE 7/8	AATCC 16.3, 200 HOURS, GRADE 4-5 ISO 105 - B02 : 1999 GRADE 7/8
F/R RATING (HFR FREE)				
F/R RATING:	ASTM E84 (ADHERED) CA TB 117-2013 FMVSS 302 & 95/28 ANNEX IV NFPA 260 UFAC	CLASS A PASS PASS CLASS 1 CLASS 1	ASTM E84 (ADHERED) CA TB 117-2013 FMVSS 302 & 95/28 ANNEX IV NFPA 260 UFAC	CLASS A PASS PASS CLASS 1 CLASS 1

• CAN BE TREATED TO MEET FAR SPECIFICATIONS.

• THESE FABRICS, WHEN TREATED AND/OR USED WITH OTHER COMPATIBLE FURNITURE COMPONENTS, HAVE BEEN SHOWN TO PERFORM WELL UNDER THE FIRE TEST CONDITIONS OF CALIFORNIA TECHNICAL BULLETIN 133, ASTM E 84 (UNADHERED), BS 5852 SOURCE 5 ("CRIB 5"), BS 7175, BS 5867 PART 2 TYPE B, IMO A.652(16) AND NFPA 701.

Maintenance & Care Instructions

- Clean with soap and water, or alcohol-based cleaners like Fantastik® and Formula 409®
- Disinfect using a 1:5 bleach/water solution
- Ultraleather® | Pro - for ink and tough stains, clean using isopropyl/rubbing alcohol
- Rinse all cleaning solutions with clean water

Earth Friendly

- **GREENGUARD Certified**
 - Meets stringent VOC emission standards
 - Promotes healthier indoor air quality
 - Contributes towards satisfying credits under LEED® and level®, BIFMA
- Compliant with Prop 65
- Less than 100 ppm of antimicrobial treatment†
- No Conflict Minerals
- No Flame Retardants (ex. Halogenated, Brominated)
- No PBDEs (Polybrominated Diphenyl Ethers)
- No Plasticizers, Heavy Metals, Stabilizers, Phthalates or Bisphenol A (BPA)
- No POPs (Persistent Organic Pollutants)
- No PVC (Polyvinyl Chloride)
- No toxic by-products
- Over 99% of solvents recaptured and recycled

†Denotes Pro, Promessa®, and Fresco

RFM Seating

619 SW Wood Street
Hillsboro, OR 97123

T 800.447.5542 | F 800.734.6377

www.rfmseating.com

RFM seating

GRADE G
2016

Ultrafabrics® and logo, Ultraleather®, Brisa®, Ultratech®, and Promessa® are trademarks of Ultrafabrics, LLC. Made in Japan.

www.ultrafabricsllc.com

