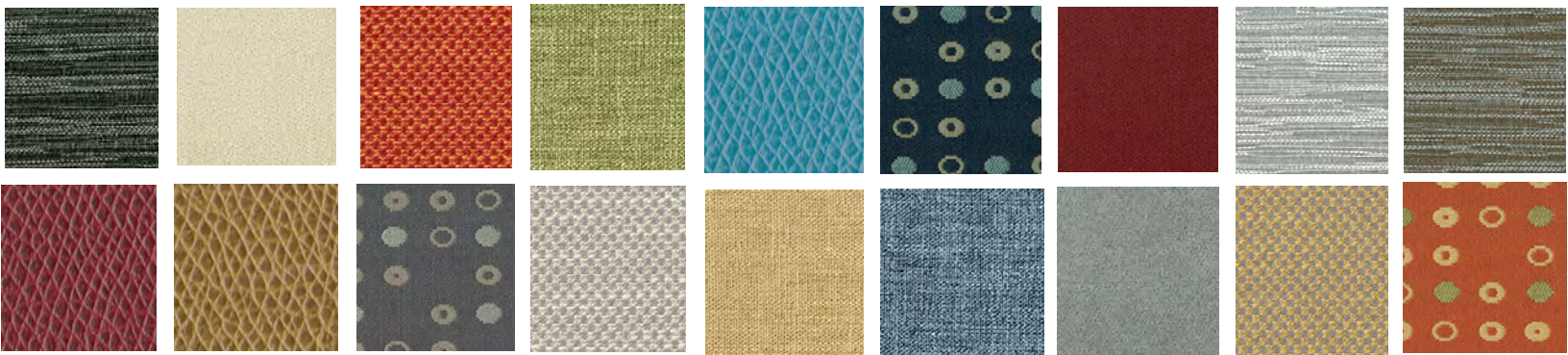


YOUR STYLE



GRADE B

WINSLOW
HIGH COTTON
FINE TUNE
ARCHETYPE
TOME

GRADE C

RUSHMORE

WINSLOW



PUTTY

HIGH COTTON



KHAKI

FINE TUNE



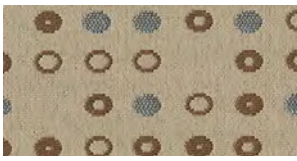
LUNA



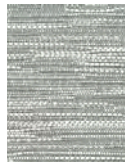
CASHEW



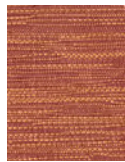
BROWN SUGAR



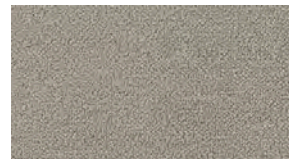
WHEAT



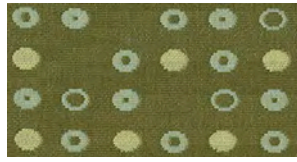
MOONBEAM



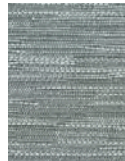
BLAZE



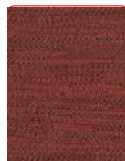
HAZE



HERB



SMOKE BLUE



DEEP RED



JADE



TANGELO



BELIZE



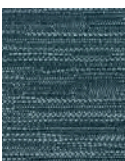
FUDGE



CORDOVAN



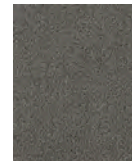
RUBY



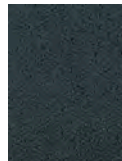
PEACOCK



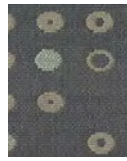
BLUE CHIP



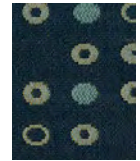
STEEL



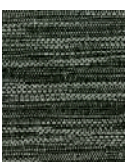
PEACOCK



ASH



INDIGO



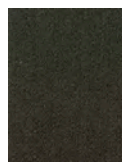
MINERAL



JET



EVERGREEN



COFFEE



COCOA



ONYX

ARCHETYPE



QUARTZ

RUSHMORE



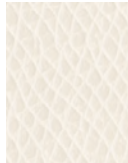
PARCHMENT



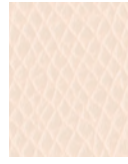
SILT



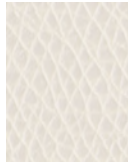
SASSY



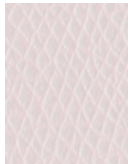
FLAXEN



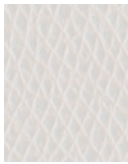
CARROT



TEAK



PEPPER



SADDLE



AQUAMARINE



EMERALD



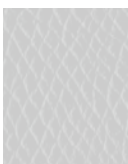
COBALT



BLUEBERRY

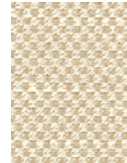


GROTTA



RAVEN

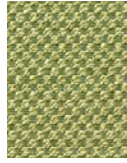
TOME



SISAL



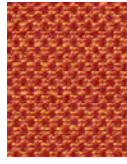
FORGE



SORREL



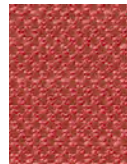
SUNDANCE



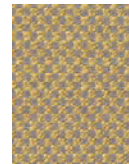
POPPY



PUEBLO



SCARLET



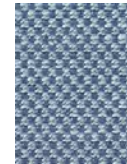
HEIRLOOM



SUGARPLUM



SAPPHIRE



POOL



JEWEL



CHARCOAL



SEPIA



SILT



HEMP



HERBAL



BOURBON



VERMILLION



ANCHOR



BLACKBERRY



ADMIRAL



CAFE



SMOKE

Fabric Specifications and Technical Data

	WINSLOW	HIGH COTTON	FINE TUNE	ARCHETYPE	RUSHMORE	TOME
Content:	Polyester 100%	Polyester 100%	Polyester 100%	Polyester 79% Rayon 21%	Polyurethane 100%	Polyester 100%
Finish:	N/A	Teflon	N/A	*i-clean™	*i-clean™	*i-clean™
Width:	54"	54"	54"	54"	54"	54"
Cleaning Code:	W	W	W	W	WS	W
Abrasion:	40,000	100,000	40,000	75,000	200,000	95,000
Weight:	11.2 oz / Lin. yd.	17.4 oz / Lin. yd.	15.9 oz / Lin. yd.	9.0 oz / Lin. yd.	20.3 oz / Lin. yd.	10.61 oz / Lin. yd.
Flammability Pass:	CA 117 – 2013 UFAC Class 1 NFPA 260	CA 117 – 2013 UFAC Class 1 NFPA 260	CA 117 – 2013 UFAC Class 1 NFPA 260	CA 117 – 2013 UFAC Class 1 NFPA 260	CA 117 – 2013 UFAC Class 1 NFPA 260 MVSS 302	CA 117 – 2013 UFAC Class 1 NFPA 260
Lightfastness:	40 Hours Class 4	40 Hours Class 4	40 Hours Class 4	40 Hours Class 4	200 Hours Class 4	40 Hours Class 4
Colorfastness:	Wet: Class 4 Dry: Class 4	Wet: Class 4 Dry: Class 4	Wet: Class 3 Dry: Class 4	Wet: Class 4 Dry: Class 4	Wet: Class 3 Dry: Class 4	Wet: Class 3 Dry: Class 4
Breaking Strength: ASTM D5034	Warp: 135 lbs. Weft: 184 lbs.	Warp: 87 lbs. Weft: 106 lbs.	Warp: 163 lbs. Weft: 141 lbs.	Warp: 152 lbs. Weft: 116 lbs.	Warp: 98 lbs. Weft: 83 lbs.	Warp: 238 lbs. Weft: 228 lbs.
Seam Slippage: ASTM D4034	Warp: 74 lbs. Weft: 49 lbs.	Warp: 76 lbs. Weft: 92 lbs.	Warp: 65 lbs. Weft: 47 lbs.	Warp: 52 lbs. Weft: 55 lbs.	Warp: 84 lbs. Weft: 85 lbs.	Warp: 68 lbs. Weft: 48 lbs.
Pilling Resistance: ASTM D3511	Class 4	Class 4	Class 4	Class 4	Class 4	Class 4

*i-clean™- a high performance stain and moisture repellent, based on Nano technology

