

AZURE/BLUE M05



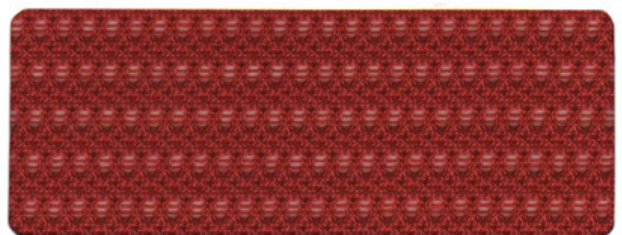
WHITE M01



SILVER M02



CAPPUCCINO/TAN M06



RED M04



CHARCOAL M03

TECHNICAL INFORMATION

Content	Weight/ Linear Yd	Abrasion Wyzenbeek	Light Fastness	Seam Slippage	Tensile Strength	Crocking Wet/Dry	Flammability
100% Polyester	348 G/Y (44"W)	30,000 Double Rubs	20 hours Class 4.5	86.4 lbf warp 100.1 lbf fill	318.1 lbf warp 235.6 lbf fill	5/5	Cal. 117-E

CLEANING INFORMATION

The cleaning code for the product on this card is W. Prompt cleaning is always recommended.

W: Spot clean only with water based upholstery shampoo or foam cleaner. Pretest a small inconspicuous area before proceeding. Do not over wet. Do not use solvents to spot clean. Cushion covers should not be removed and laundered. To prevent overall soiling, frequent vacuuming or light brushing with a non-metallic, soft bristle brush to remove dust and grime is recommended. When cleaning a spill, blot immediately to remove spilled material. Evenly clean the entire panel in a seam to seam fashion. Do not clean just the spots or stains. When an overall soiled condition has been reached and professional care is required, contact an IICRC certified firm (www.iicrc.org).

For detailed specifications, care and cleaning information for each pattern, please contact our supplier.

ADDITIONAL INFORMATION

Memo Samples: Individual memo samples can be ordered.

Color Matching: RFM always attempts to ship a satisfactory commercial match. Because of industry standard dye lot variation, colors may not match exactly.

Specifications: Specifications are correct at the time of printing. Current specifications are available on our website.

For information or assistance with products or services, call us at 800.447.5542 or refer to our web site, www.rfmseating.com.

Please refer to the RFM pricing guide for product information, specifications, warranties and options.