

ASSEMBLY INSTRUCTIONS

Thanks for purchasing your new RFM Seating chair. Here is information on how to assemble your chair the best possible way. Visit our website at www.rfmseating.com under our support tab for a pdf print out of this brochure.

STEP 1. CYLINDER ASSEMBLY

- A. Place plastic can cover on top of cylinder with the larger side down.
- B. Align the plastic tipped end of the cylinder with the hole in the bottom of seat control.
- C. Using your hand, push cylinder firmly into hole. Using a hammer (Not provided), tap the end of the cylinder into the seat control.

STEP 2. ATTACHING THE BASE

- A. With cylinder securely in place, slide base with casters onto cylinder.
- B. Using a hammer, tap base firmly around cylinder to secure in place.

STEP 3. FOR RATCHET BACK CHAIR

- A. Slide back bar into control bar bracket.
- B. Align holes and hand tighten the 3 black bolts into the bar.
- C. Using a ½ socket or wrench (Not provided), tighten the 3 bolts to secure the back.

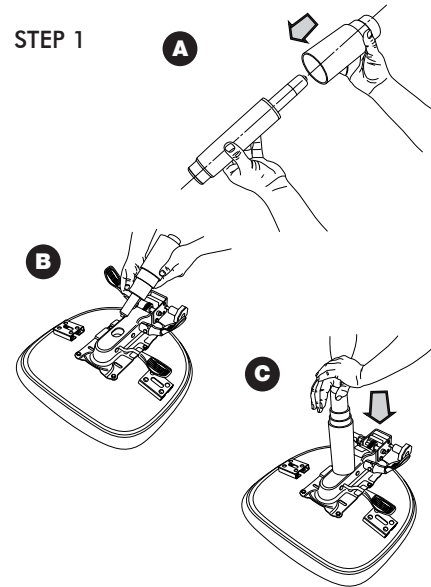
FOR STRAIGHT BACK CHAIR

- A. Slide back bar down and into control bracket. Hand tighten knob to hold back in position.
- B. Insert small stop plug into hole near the bottom of back bar. Using a hammer, tap small stop plug firmly into the hole.

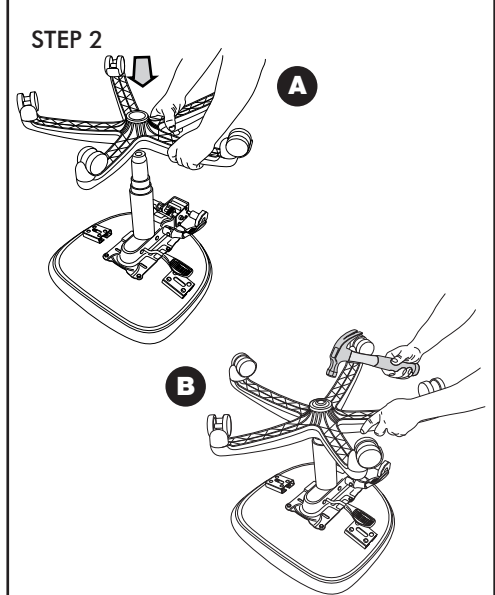
STEP 4. ARM ATTACHMENT

- Slide the arm extension into the opening beneath the seat cushion. Line up the holes and insert knob. Turn it clockwise.

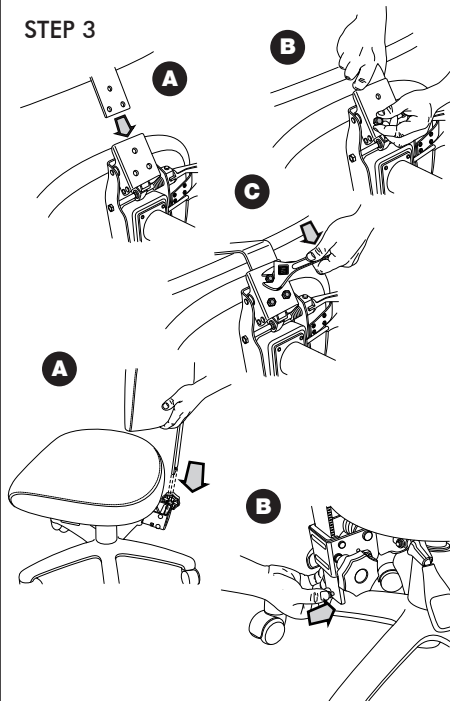
STEP 1



STEP 2



STEP 3



STEP 4

