

## FOOT RING ASSEMBLY INSTRUCTIONS

Thanks for purchasing your new RFM Seating chair. Here is information on how to assemble your chair the best possible way. Visit our website at [www.rfmseating.com](http://www.rfmseating.com) under our support tab for a pdf print out of this brochure.

### PARTS

1. FOOTRING20 (1)
2. FOOTRINGHVY (1)
3. HRDWRE0092 (1)

**STEP 1.** Place FOOTRINGHVY sleeve over the cylinder with screw (HRDWRE0092) toward the bottom.

**STEP 2.** Slide the FOOTRINGHVY up the cylinder 4 inches above the bottom of the cylinder. Lightly tighten HRDWRE0092 with a #2 phillips screwdriver. (Not provided)

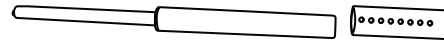
**STEP 3.** Place the FOOTRING20 over the top of the cylinder and loosely tighten the two knobs of the FOOTRING20. One into hole and one against the FOOTRINGHVY.

**STEP 4.** Place the cylinder into the base. Insert the cylinder into the cylinder receiver on the bottom of the control.

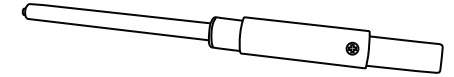
**STEP 5.** To seat the cylinder in the control and base, sit on chair. After cylinder is seated, loosen HRDWRE0092 allowing FOOTRINGHVY to rest on base.

**STEP 6.** Tighten HRDWRE0092. Adjust FOOTRING20 to desired height with 2 knobs.

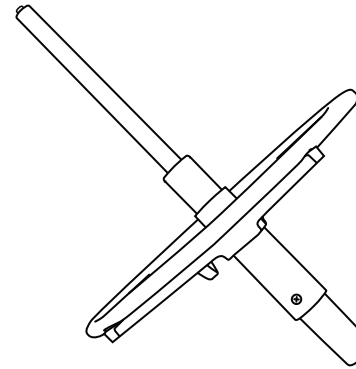
STEP 1



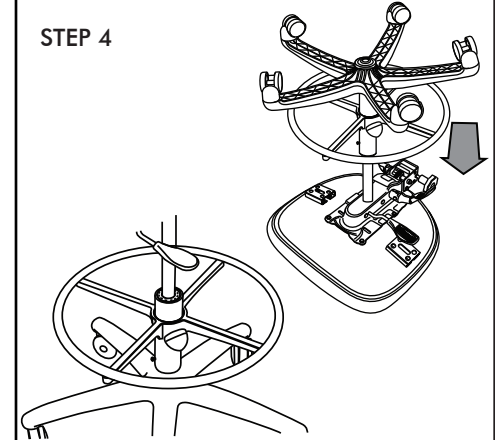
STEP 2



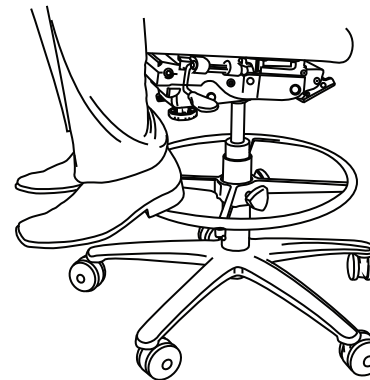
STEP 3



STEP 4



STEP 5



STEP 6

